

CAVE SPRINGS SEWER SYSTEM DESIGN

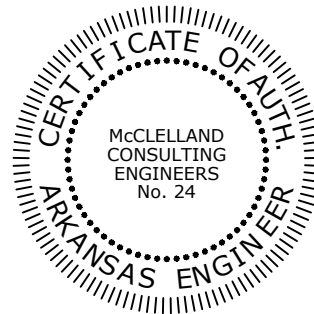
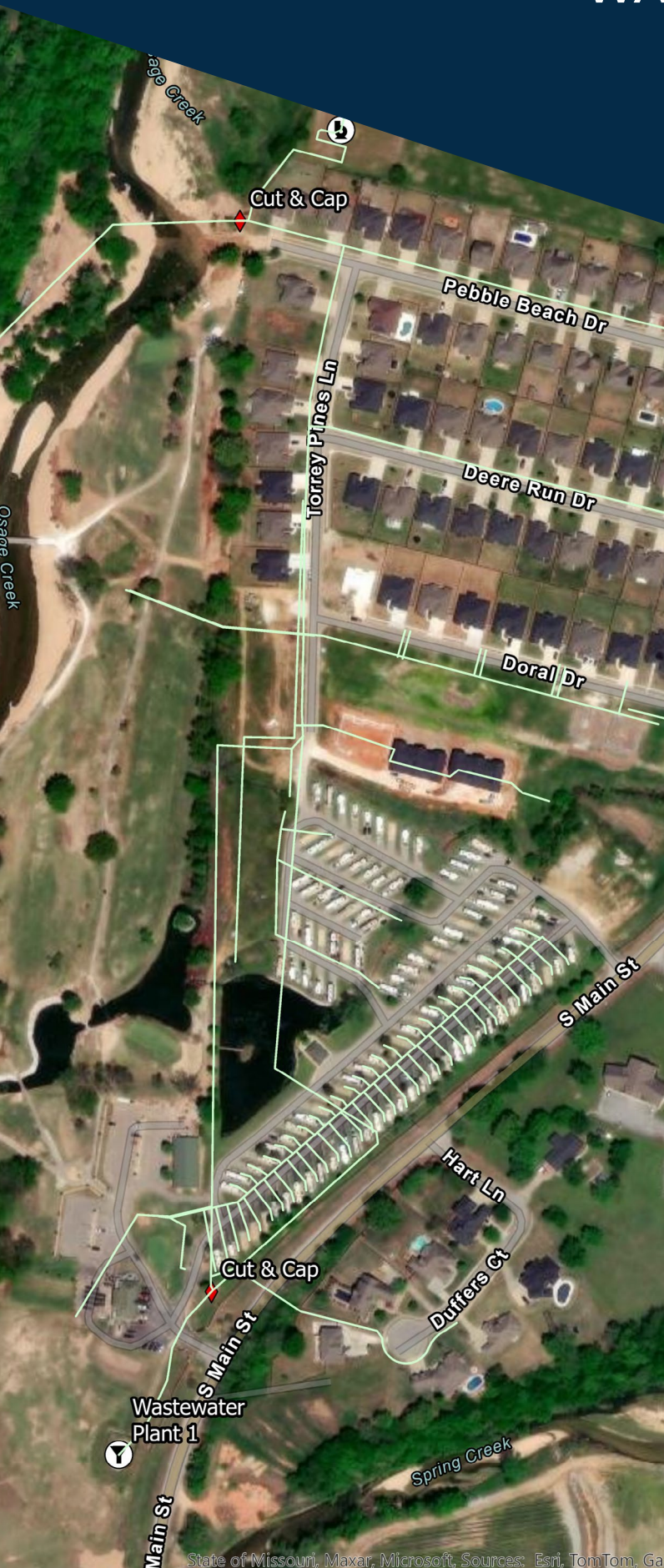
WASTEWATER CLOSURE PLAN

Cave Springs, Arkansas

Project Number: 20-2111

Permit No: 4893-WR-3

AFIN: 04-01642



City of
Cave Springs
Arkansas

April 2025

Prepared by:

MCE McCLELLAND
CONSULTING
ENGINEERS, INC.
DESIGNED TO SERVE

1580 East Stearns Street
Fayetteville, AR 72703

P: 479.443.2377

Table of Contents

Cover Letter	1 of 1
Background	1 of 3
Closure Plan	2-3 of 3
<u>Appendix</u>	
Appendix A – Existing WWTP Plans	
<u>Exhibits</u>	
Exhibit 1 – Overall Map	
Exhibit 2 – Cut and Cap Plant #1	
Exhibit 3 – Cut and Cap Plant #2	
Exhibit 4 – Wastewater Plant #1	
Exhibit 5 – Wastewater Plant #2	
Exhibit 6 – Pump Tanks	
Exhibit 7 – Wastewater Plant #1 Property Transfer	
Exhibit 8 – Wastewater Plant #2 Property Transfer	

Closure Plan

Closure and Notification Requirements

Pursuant to NPDES Permit 4893-WR-3, Part II, Paragraph 17, the City of Cave Springs ceased WWTP operations on March 20, 2025. The City of Cave Springs is requesting approval of the following closure plan.

The City of Cave Springs entered into a Settlement Agreement with The Creeks Golf Course, LLC (CGC). The CGC hereby consents to the abandonment of all of the Improvements by City in their present locations, and the Improvements shall become the sole property and responsibility of CGC. Following the Connection Date, the City will remove any sludge present in the Drip Field tanks. The City will provide documentation to the Arkansas Department of Energy and Environment, Division of Environmental Quality that demonstrates that removal and affirmatively states that the system will be assigned to CGC, in mothball status, for a future determination of whether CGC will make future use of the system (collectively, the "Decommissioning Activities").

Record Keeping

A copy of the approved Closure Plan will be maintained at City Hall. The City will maintain the facility records until ADEQ authorized destruction of the records. Within 30 days of the facility closure, the City of Cave Springs shall submit a certification of closure to ADEQ and request termination of the permit as required.

Closure Procedures

The closure of the City of Cave Springs wastewater treatment facilities will be performed after the City of Cave Springs connects to the Northwest Arkansas Conservation Authority (NACA) collection system and wastewater treatment facility. Upon connection to the NACA system, the City's treatment facilities will be decommissioned as follows:

- Notify ADEQ of plans to close the facilities
- Cease WWTP operations (March 20, 2025) and pump wastewater to NACA
- Cut and cap force main sewer feeding Plant #1, refer to Exhibit 2.
- Cut and cap force main sewer feeding Plant #2, refer to Exhibit 3.
- Treatment Plant #1 (Exhibit 4)
 - Remove and dispose of wastewater in treatment components at Plant #1
 - Remove and dispose of solids remaining in treatment components at Plant #1
- Treatment Plant #2 (Exhibit 5)
 - Remove and dispose of wastewater in treatment components at Plant #2
 - Remove and dispose of solids remaining in treatment components at Plant #2
- Pump Tank 3 (Exhibit 6)
 - Disconnect power
 - Remove and dispose of wastewater in pump tank
 - Remove and dispose of solids remaining in pump tank
 - Fill pump tank with clean water to prevent floating
- Pump Tank 4A (Exhibit 6)
 - Disconnect power
 - Remove and dispose of wastewater in pump tank

Closure Plan

Closure and Notification Requirements

Pursuant to NPDES Permit 4893-WR-3, Part II, Paragraph 17, the City of Cave Springs ceased WWTP operations on March 20, 2025. The City of Cave Springs is requesting approval of the following closure plan.

The City of Cave Springs entered into a Settlement Agreement with The Creeks Golf Course, LLC (CGC). The CGC hereby consents to the abandonment of all of the Improvements by City in their present locations, and the Improvements shall become the sole property and responsibility of CGC. Following the Connection Date, the City will remove any sludge present in the Drip Field tanks. The City will provide documentation to the Arkansas Department of Energy and Environment, Division of Environmental Quality that demonstrates that removal and affirmatively states that the system will be assigned to CGC, in mothball status, for a future determination of whether CGC will make future use of the system (collectively, the "Decommissioning Activities").

Record Keeping

A copy of the approved Closure Plan will be maintained at City Hall. The City will maintain the facility records until ADEQ authorized destruction of the records. Within 30 days of the facility closure, the City of Cave Springs shall submit a certification of closure to ADEQ and request termination of the permit as required.

Closure Procedures

The closure of the City of Cave Springs wastewater treatment facilities will be performed after the City of Cave Springs connects to the Northwest Arkansas Conservation Authority (NACA) collection system and wastewater treatment facility. Upon connection to the NACA system, the City's treatment facilities will be decommissioned as follows:

- Notify ADEQ of plans to close the facilities
- Cease WWTP operations (March 20, 2025) and pump wastewater to NACA
- Cut and cap force main sewer feeding Plant #1, refer to Exhibit 2.
- Cut and cap force main sewer feeding Plant #2, refer to Exhibit 3.
- Treatment Plant #1 (Exhibit 4)
 - Remove and dispose of wastewater in treatment components at Plant #1
 - Remove and dispose of solids remaining in treatment components at Plant #1
- Treatment Plant #2 (Exhibit 5)
 - Remove and dispose of wastewater in treatment components at Plant #2
 - Remove and dispose of solids remaining in treatment components at Plant #2
- Pump Tank 3 (Exhibit 6)
 - Disconnect power
 - Remove and dispose of wastewater in pump tank
 - Remove and dispose of solids remaining in pump tank
 - Fill pump tank with clean water to prevent floating
- Pump Tank 4A (Exhibit 6)
 - Disconnect power
 - Remove and dispose of wastewater in pump tank

- Remove and dispose of solids remaining in pump tank
 - Fill pump tank with clean water to prevent floating
- Pump Tank 4B (Exhibit 6)
 - Disconnect power
 - Remove and dispose of wastewater in pump tank
 - Remove and dispose of solids remaining in pump tank
 - Fill pump tank with clean water to prevent floating
- Pump Tank 5 (Exhibit 6)
 - Disconnect power
 - Remove and dispose of wastewater in pump tank
 - Remove and dispose of solids remaining in pump tank
 - Fill pump tank with clean water to prevent floating
- Transfer of Real Property: The City shall cause to be transferred to CGC by general warranty deed the following tracts of real property together with any improvements thereon:
 - Benton County Parcel No. 05-10218-000 consisting of .04 acres, more or less (Exhibit 7);
 - Benton County Parcel No. 05-10212-004 consisting of .29 acres, more or less (Exhibit 7); and
 - Benton County Parcel No. 05-10212-005 consisting of 5.01 acres, more or less (Exhibit 8).
 - The transfers shall be free and clear from any lien, claim or encumbrance except for easements granted pursuant to the Agreement.

Disposal

Liquid waste will be transported by a licensed hauler and disposed of at the new City of Cave Springs pump station. Solids from the treatment facilities and pump tanks will be disposed of in a Class 1 landfill.

Closure procedures, wastewater disposal, and solids disposal will be monitored and documented. All documentation will be submitted to ADEQ. Final closure of the sites will be complete upon the removal of all wastes and final closure certification has been submitted to ADEQ.

Closure Schedule

All work will be completed within 60 days of plan approval by ADEQ.